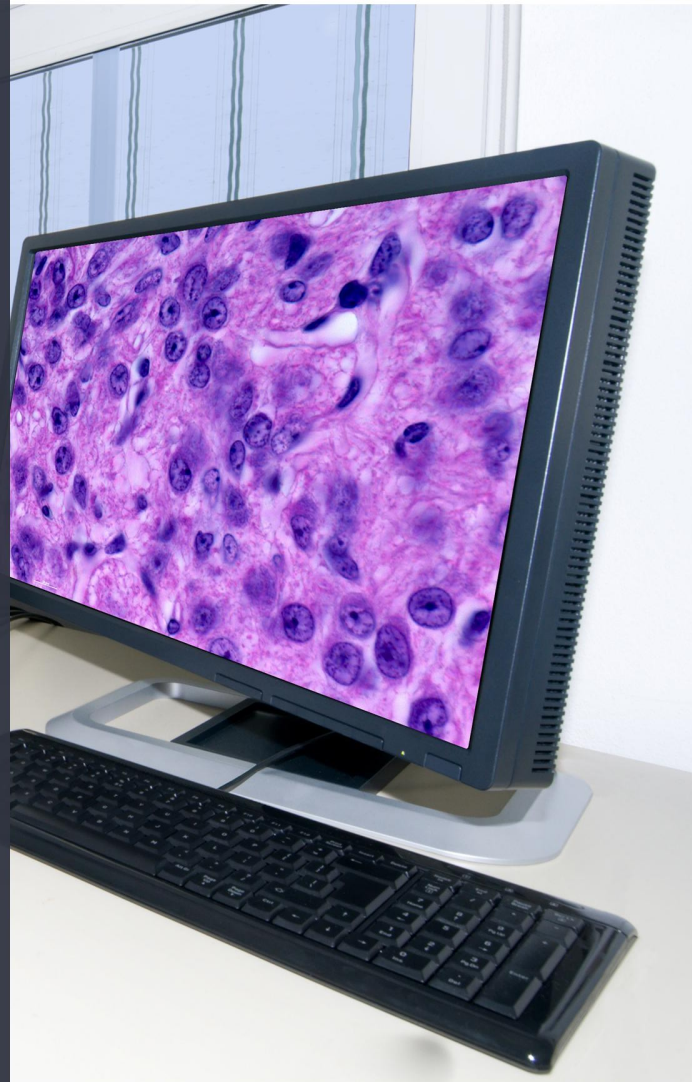


**IMPROVING
TECHNIQUES AND
TECHNOLOGY FOR
CELLULAR AND
MOLECULAR
PATHOLOGY**

29th - 1st
November 2016
Location: **Online**

This event will share best practice, and discuss new and improved methodologies for the cellular and molecular analysis of disease.

#PathESC



<http://lifescienceevents.com/path16>

**PLEASE DISPLAY ON A
RELEVANT NOTICE BOARD OR
SEND TO ANYONE YOU THINK
SHOULD BE ATTENDING**

